

Nature Definition

The Nature Definition is rather narrow and specific. On the following pages are some sections of the definition, in red, illustrated with examples and comments.

Full PCC Definition:

Nature photography is restricted to the use of the photographic process to depict observations of natural history in such a fashion that a well informed person will be able to identify the subject material and to certify as to its honest presentation. The **story telling** value of a photograph must be weighed more than the pictorial quality while maintaining high technical quality. Human elements shall not be present, except where those human elements enhance the nature story. Scientific bands, scientific tags or radio collars on wild animals are permissible. Photographs of human created hybrid plants, cultivated plants, domestic animals, or mounted specimens, are ineligible, as is any form of manipulation that alters the truth of the photographic statement. **No techniques that add, relocate, replace, or remove pictorial elements except by cropping are permitted. This includes strong vignettes and any blurring. Techniques that enhance the presentation of the photograph without changing the nature story or the pictorial content, or without altering the content of the original scene, are permitted. Examples include HDR and Focus Stacking. All allowed adjustments must appear natural.** Color images can be converted to grey-scale monochrome.

The following Image Editing techniques are not allowed:

- Any form of manipulation that alters the truth of the photographic statement.
- Cloning.
- Removing image elements by any means other than cropping (including content-aware fill).
- Adding image elements (including clip art or images created by someone else).
- Duplicating image elements.
- Replacing image elements (such as the sky)
- Moving elements within an image (including content-aware move).
- Blurring the background to obscure elements in the original scene.
- Darkening the background to obscure elements in the original scene.
- Adding a vignette not produced by the camera.
- Adding textures or artistic filters.

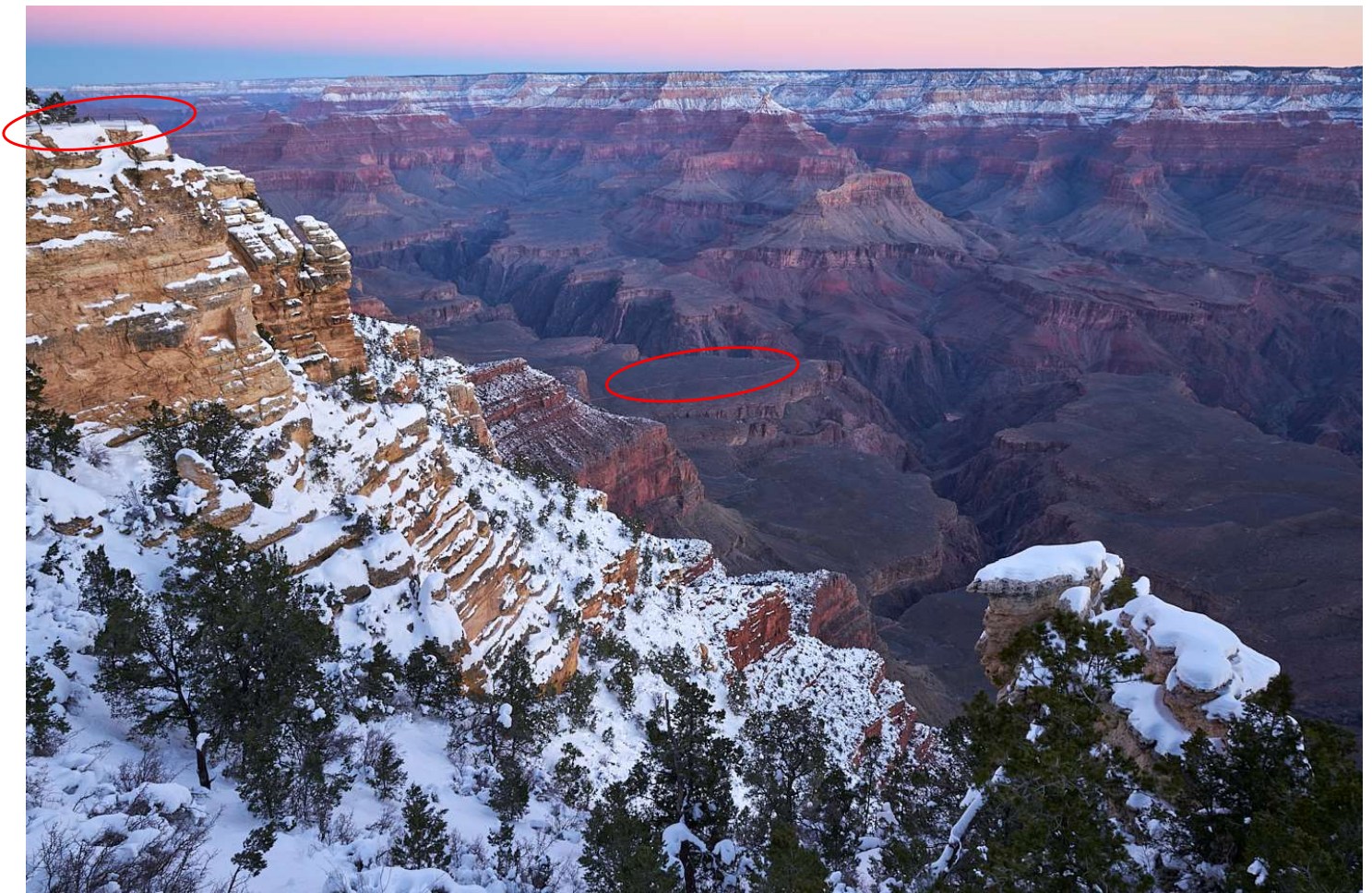
Human elements shall not be present, except where those human elements enhance the nature story.

Human elements include any objects made by, or altered by, people. Sometimes these are quite subtle- like footprints or initials carved in trees.

Not Allowed: Branches that are sawed or clipped



Scrutinize landscapes for buildings, roads, trails, fences, power poles etc. This image is **not** allowed in Nature because of the visible fence and trail.



Captive Subjects are allowed

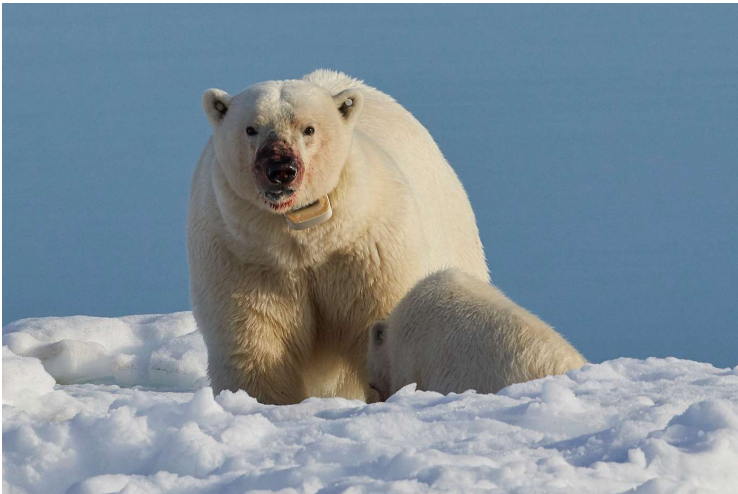


Allowed: No human elements are visible



Not Allowed: visible fence

Scientific bands, scientific tags or radio collars on wild animals are permissible.



Allowed: Radio collar and ear tags



Allowed: leg band

Photographs of human created hybrid plants, cultivated plants, domestic animals, or mounted specimens, are ineligible...

These are not allowed:



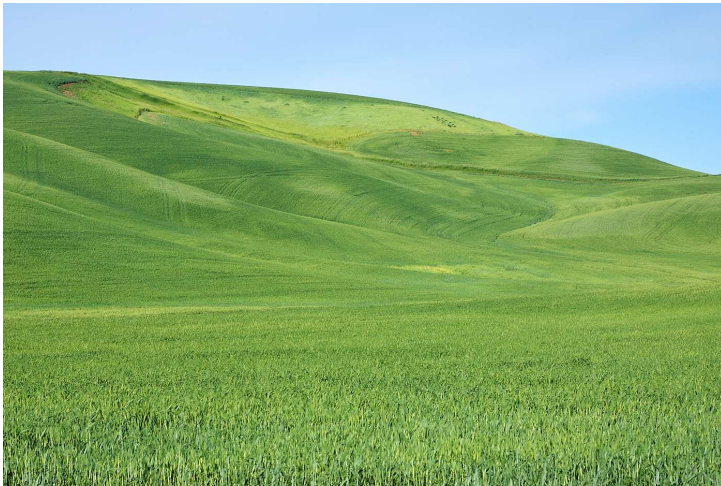
Farm animals / livestock



Hybrid plant

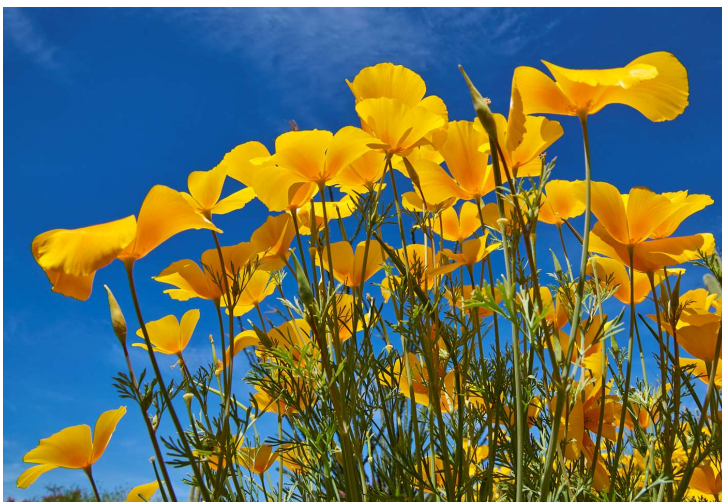


Domestic Animal



Cultivated plants (crops)

... as is any form of manipulation that alters the truth of the photographic statement (is ineligible)



Original color of the Mexican Gold Poppies



Cannot alter the truth of the subject

The following image editing techniques are not allowed.

Removing image elements by any means other than cropping is not allowed

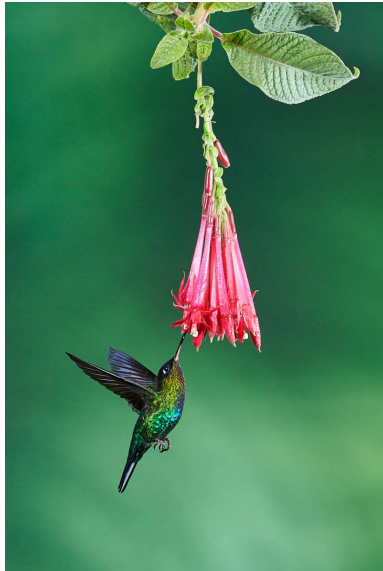


original



Branch removed- not allowed

Adding image elements is not allowed

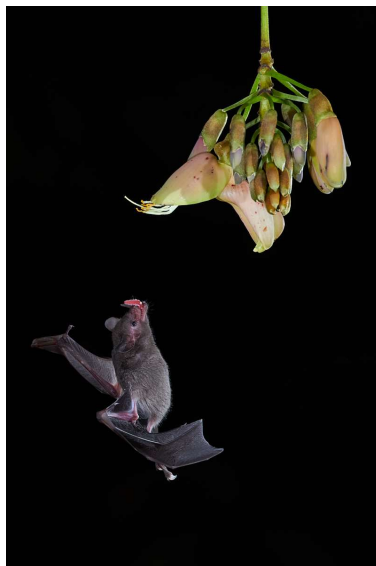


original



Bird added-
not allowed

Moving Image elements is not allowed



original



Bat moved-
not allowed

The following image editing techniques are not allowed.

Blurring the background during processing to obscure elements in the original scene



original

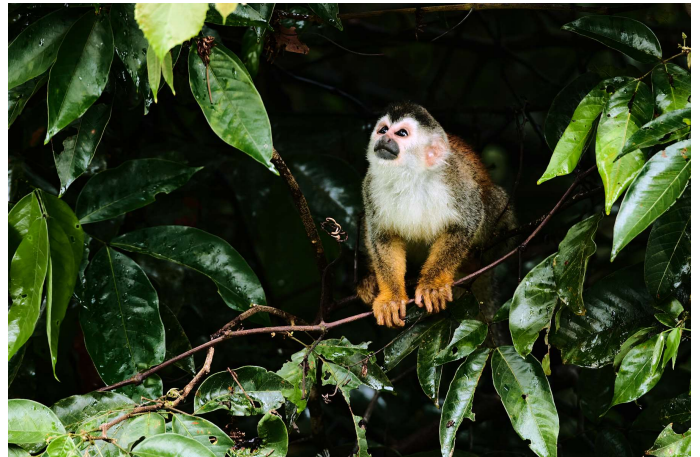


Not allowed- blurring during processing

Darkening the background is not allowed



original

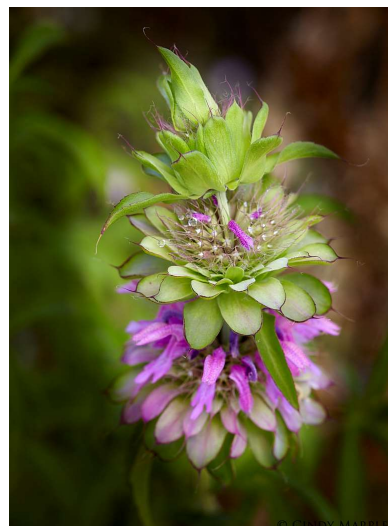


Not allowed- Darkened during processing

Dark or light vignettes are not allowed



original



Not allowed- Vignette added

Replacing elements (such as the sky) is not allowed



original



Not allowed- Sky replaced